

The background of the slide is a light gray gradient with several realistic water droplets of various sizes scattered across it. The droplets have highlights and shadows, giving them a three-dimensional appearance. They are located in the top-left, top-right, and bottom-right areas of the slide.

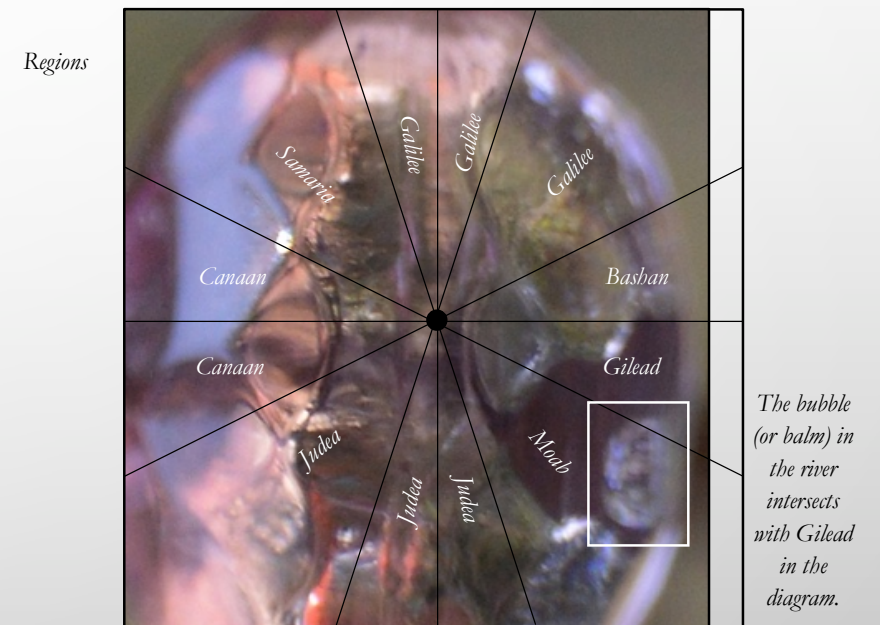
# BALM OF GILEAD

Healing & Restoration

Copyright © 2024 Stone E-learning

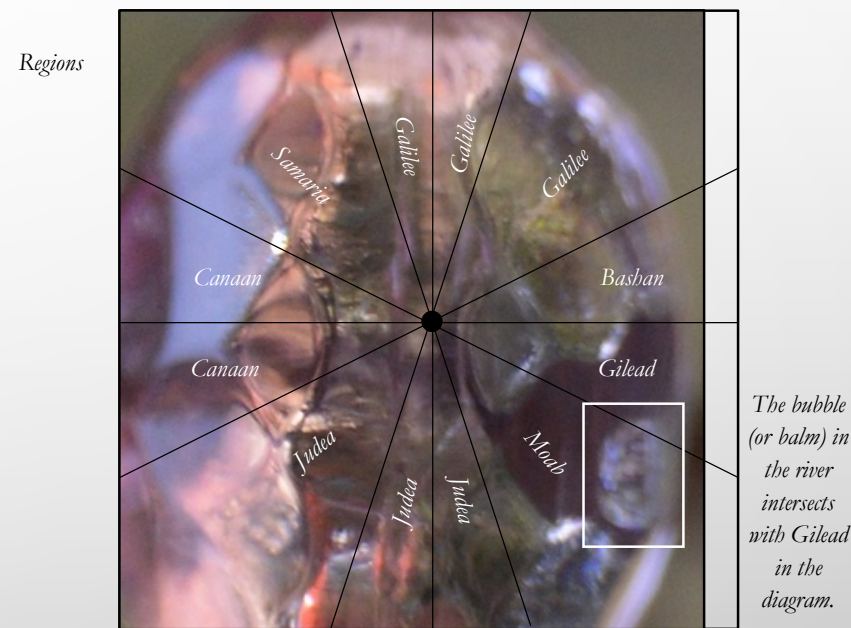
# BUBBLE IN THE RIVER

- The bubble in the river is outlined with a white box.
- This could represent the balm of Gilead.
- The bubble intersects with Gilead in the diagram.



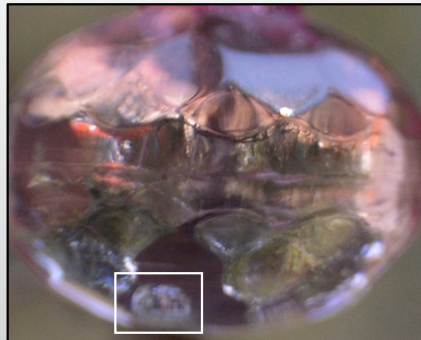
# MOUNTAINS & VALLEYS

- “Gilead” means “heap (of stones) of testimony.”
- It could also mean “rocky region.”
- From every mountain top to every valley,  
the Lord is with us.



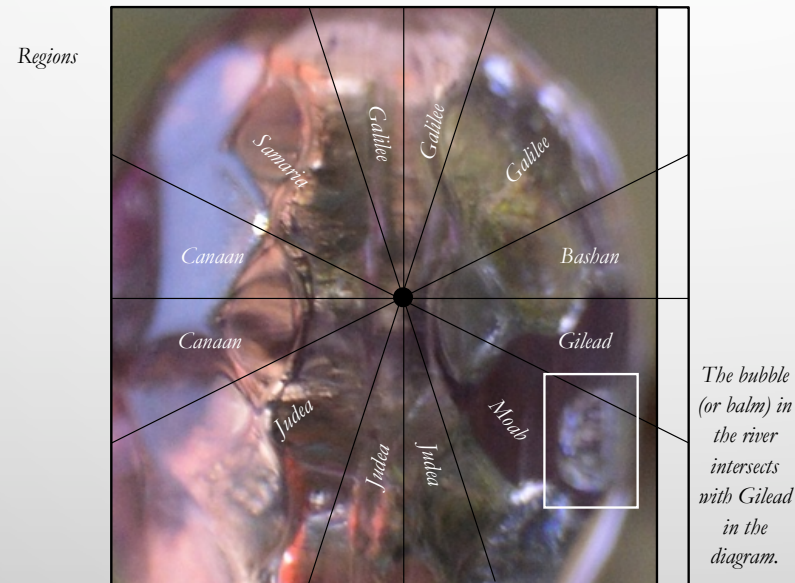
# HEALING WATERS

- In Ezekiel 47:9, it says that the waters will be healed.
- This will take place at the end of the tribulation when Jesus returns.
- Let's take a look at the entire verse: "And it shall come to pass, that every thing that liveth, which moveth, whithersoever the rivers shall come, shall live: and there shall be a very great multitude of fish, because these waters shall come thither: for they shall be healed; and every thing shall live whither the river cometh."



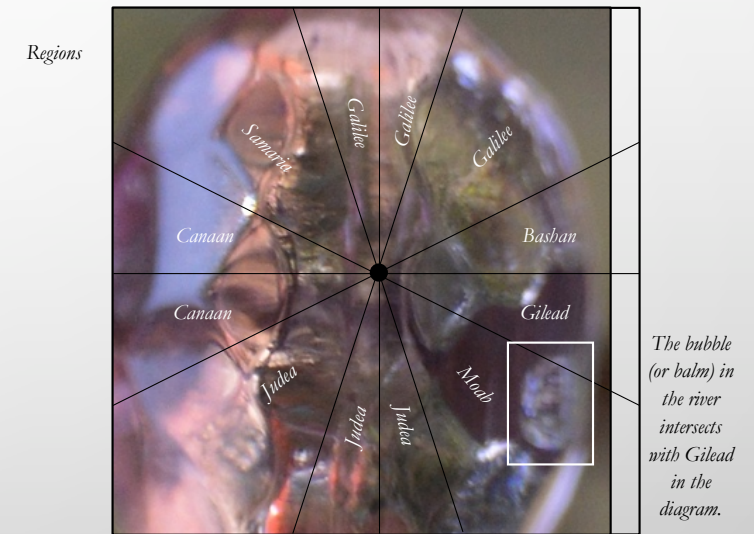
# GENESIS

A balm is mentioned in Genesis 37:25, where it says that “a company of Ish’-me-el-ites came from Gil’-e-ad with their camels bearing spicery and balm and myrrh, going to carry it down to E’-gypt.”



# JEREMIAH

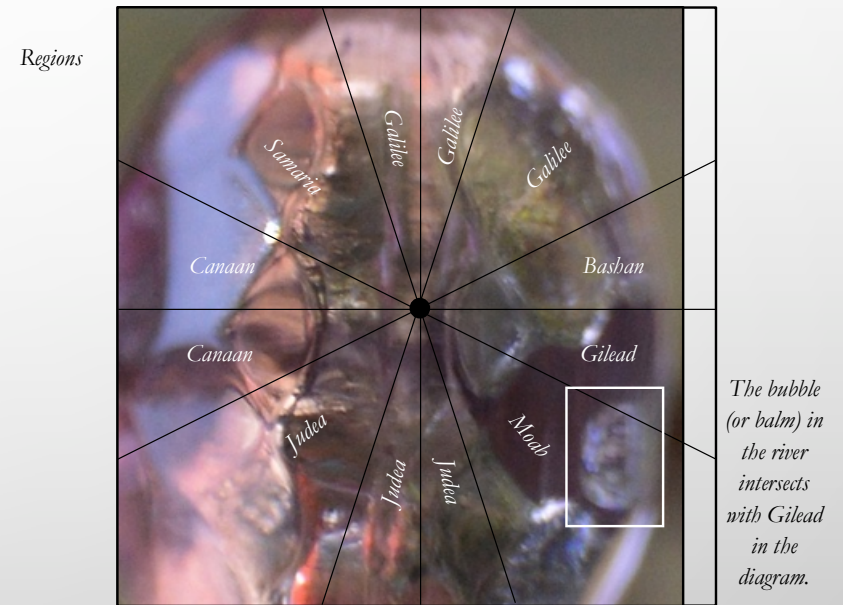
Then, in Jeremiah 8:22, the following questions are asked: “Is there no balm in Gil’-e-ad; is there no physician there? why then is not the health of the daughter of my people recovered?”





# HEALING & RESTORATION

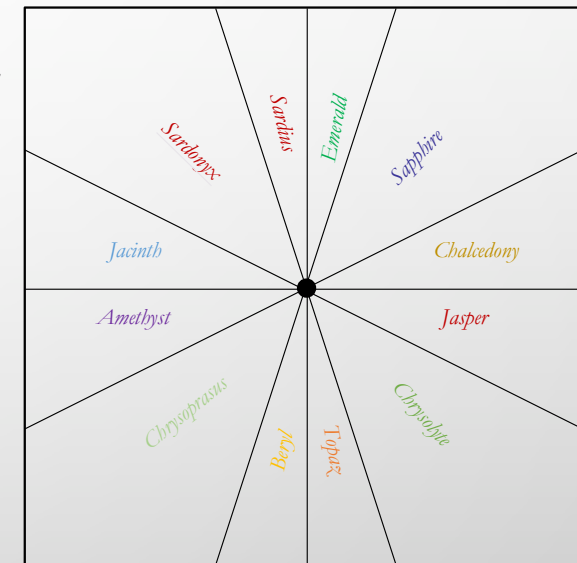
- Since all things radiate out from the Lord in the diagram, we can conclude that Jesus is the balm of Gilead.
- Jesus is the great physician.
- When Jesus returns, healing and restoration will take place on the earth.



# ALTAR OF SACRIFICE

- When we overlap the diagrams, Gilead is in the same section as the altar of sacrifice in the temple.
- Jesus was the perfect Passover Lamb who died for our sins.
- The cross is where Jesus was sacrificed on our behalf.
- The jasper stone in the New Jerusalem foundations represents the altar of sacrifice (and the cross).

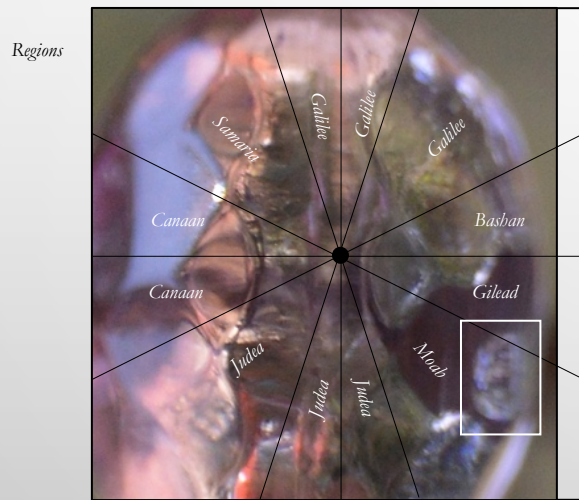
*New  
Jerusalem  
Diagram*



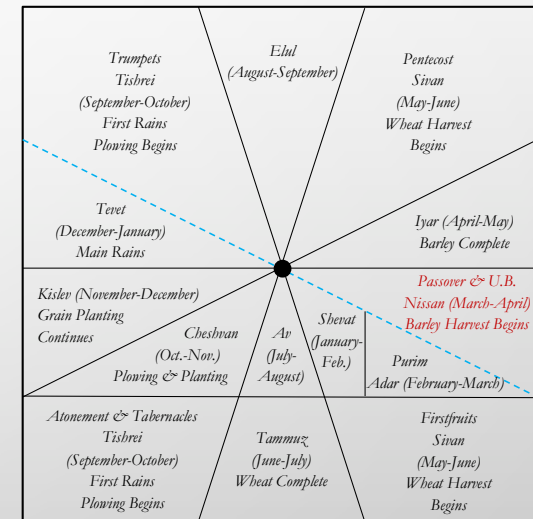
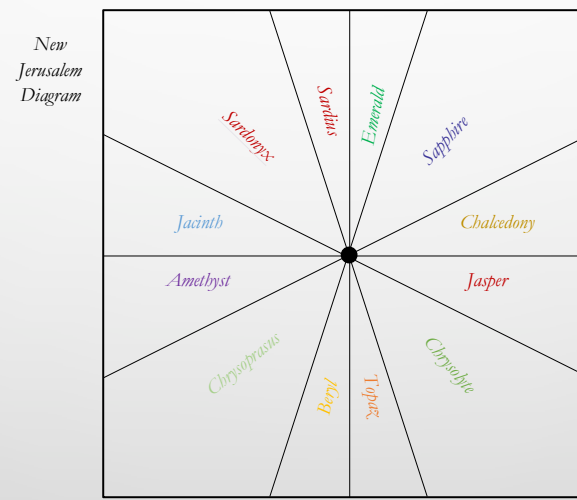


# NISAN

- Gilead and the jasper stone are in the same section as Nisan.
- The tribulation could begin during the month of Nisan, perhaps the first day (April 9, 2024).

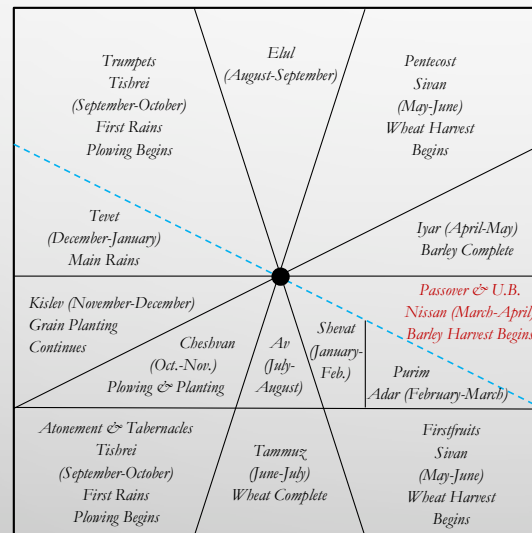


The bubble (or balm) in the river intersects with Gilead in the diagram.



# BLUE DOTTED LINE

- The blue dotted line in the diagram represents winter.
- It is at a 36-degree tilt.
- This line separates the last day of Adar II (April 8, 2024) and the first day of Nisan (April 9, 2024).

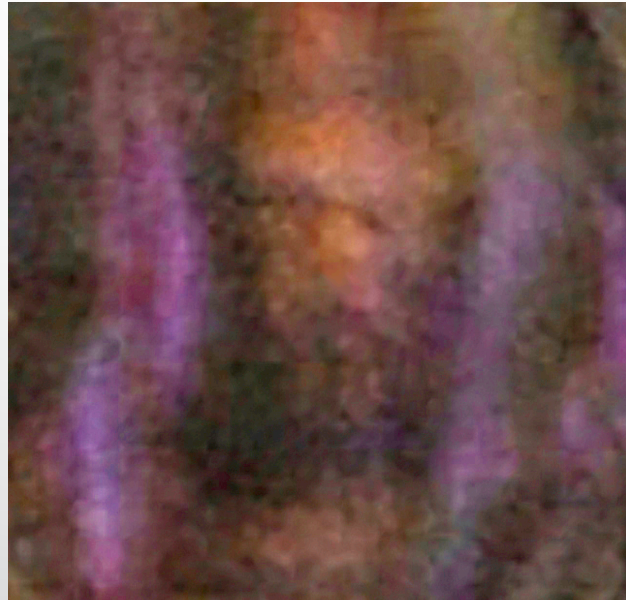


# TRANSITION

- A transition will take place from Adar II to Nisan.
- This transition could include the rapture, which is the catching away of the church.
- It could also include the beginning of the tribulation.

# JESUS WILL RETURN

At the end of the tribulation, Jesus will return to bring healing and restoration.



# HYMN

The hymn “There is a Balm in Gilead” says the following:

There is a balm in Gilead  
To make the wounded whole  
There is a balm in Gilead  
To heal the sin-sick soul  
Sometimes I feel discouraged  
And deep I feel the pain  
In prayers the holy spirit  
Revives my soul again